

General Service Bimetal Thermometer (121T)

Applications

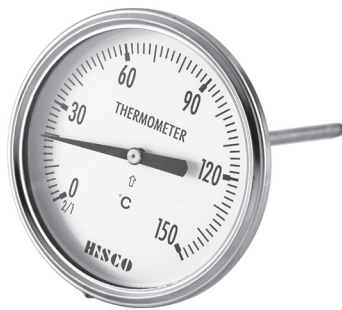
- Providing economical and reliable service
- Non-corrosive media such as Gas, Oil or Water
- Machine and plant engineering
- Piping, pressure vessels and industrial heating

Temperature Element

- Coiled bimetal

Working Range

- Maximum scale value



Standard Specification Overview

Dial Size

- 75mm, 100mm

Reference Accuracy

- $\pm 2.0\%$ of Full Scale

Scale Ranges

- $-50 \sim 0 \sim 500^{\circ}\text{C}$

* For more information, see the ordering information table.

Process Connection

- PT ("R" in ISO) 1/4", 3/8", 1/2"

Material

- Case : Chrome Plated Fe
- Ring (Cover) : Chrome Plated Fe
- Connection : Chrome Plated Brass
- Stem : 304 SS
- Window : Glass
- Dial : White Aluminum with Black Graduations
- Pointer : Aluminum Alloy, Black Finished

Optional Extra

- Test Report by Manufacturer
- Test Report by KOLAS (ILAC-MRA)
- Connection Material (304 SS)
- OEM Service for a specific customer

Ordering Information for 121T

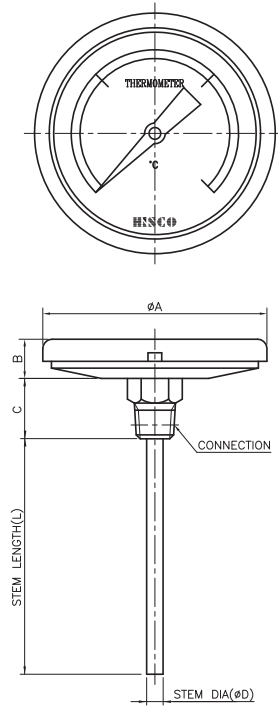
● = Standard Products ▲ = Available NA = Not Available

Model	Description	Case & Ring	Connection / Stem	
121T	General Service Bimetal Thermometer	Chrome Plated Fe (Bending)	Chrome Plated Brass / 304 SS	
Code	Dial Size	Accuracy	121T	
30	75mm	±2.0% of Full Scale	●	
40	100mm	±2.0% of Full Scale	●	
Code	Mounting Type		30	40
D	Center Back Connection Stem Mounting		●	●
Code	Process Connection Style		30	40
2	PT ("R" in ISO Standard)		●	●
4	NPT		▲	▲
0	Others		↻	↻
Code	Process Connection Size		30	40
C	1/4"		▲	▲
D	3/8"		▲	▲
F	1/2"		●	●
X	Others		↻	↻
Code	Range		30	40
XXX	Refer to the Temperature Range Code Table		●	●
Code	Sensor (Stem) Outer Diameter		30	40
M6	6.4mm		▲	▲
M8	8.0mm		▲	▲
Please request for other size of stem out Diameter.				
Code	Sensor (Stem) Length			
0075	75mm			
0100	100mm			
0150	150mm			
XXXX	Other (specify the length in mm or inch)			
Code	Applicable Accessory Options		30	40
W1	With Thermowell		▲	▲
J1	Swivel Nut		▲	▲
J2	Compression Fitting		▲	▲
J3	Adjustable Union		▲	▲
J4	Screw Union for 3/4"		▲	▲
J0	Not Apply		●	●
Code	Other Options		30	40
Test Reports				
T1	Test Report by Manufacturer		▲	▲
T2	Test Report by KOLAS (ILAC-MRA)		▲	▲
Other Option				
CM	Connection Material (304 SS)		▲	▲
OE	OEM Service for a specific customer		▲	▲

Sample Model Selection : 121T40D2F117M60100J0

* The standard specification and price are subject to change without prior notice

General Service Bimetal Thermometer (121T)



[UNIT : mm]

Code	Dial Size	A	B	C
30	φ75	84	19.5	PT1/2"
40	φ100	111	20	

HISCO HISCO, INC.

15-5, Yangpyeong-dong, 4-ga, Yeongdeungpo-gu, 150-866 Seoul, Korea
 T : 82-2-2677-6046 F : 82-2-2672-1873 <http://www.hiscoi.com>