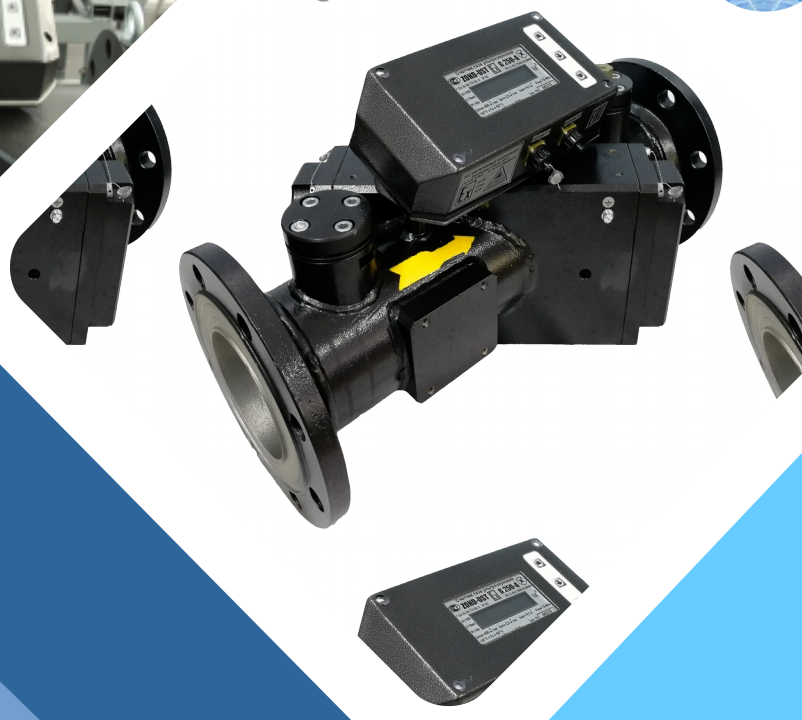




2022



## ZOND-UST

Providing you with the perfect ultrasonic gas flow meter for any application



## PRODUCT DESCRIPTION

ZOND-UST - is a multipath ultrasonic gas flow meter, designed for measurement of operating volume of natural gas, nitrogen, air and other clean and dry gases.

## ZOND-UST – PROVIDING YOU WITH THE PERFECT GAS FLOW METER FOR ANY APPLICATION

### Application:

Application field – commercial and technological gas metering on industrial and public utility companies, gas distribution stations, gas distribution points and boiler stations.

Name	Typical size	Qmin, m3/h	Qmax, m3/h	Qvar, m3/h	DN	Weight, kg
ZOND-UST	G160	1,6	250	12,5	80	50
ZOND-UST	G250	2,5	400	20,0	80	50
ZOND-UST	G250	2,5	400	20,0	100	60
ZOND-UST	G400	4,0	650	32,5	100	60
ZOND-UST	G650	6,5	1000	50,0	150	70
ZOND-UST	G1000	10,0	1600	80,0	150	70
ZOND-UST	G1600	16,0	2500	125,0	200	110
ZOND-UST	G2500	25,0	4000	200	200	110
ZOND-UST	G4000	40,0	6500	325	300	250

## Technical characteristics

<b>Parameter name</b>	Value or parameter
<b>Target medium</b>	Natural gas, nitrogen, air, clean, dry gases
<b>Quantity of acoustic pairs</b>	G160...G400 — 3 pairs, G 650 and more — 4 pairs
<b>Maximal pressure, Mpa (kgf/cm2)</b>	1,6 (16)
<b>Relative error, %</b>	±1% (±2%)
<b>Verification period</b>	2 years
<b>Length of straight lines, DN</b>	8 DN before meter, 3 DN after meter

## Flowrate table

Q <sub>max</sub> / Pover, MPa	G160	G250	G400	G650	G1000	G1600	G2500	G4000
Q <sub>max</sub> :Q <sub>min</sub> =1:160								
0,0012	250	400	650	1000	1600	2500	4000	6500
0,1	500	800	1300	2000	3200	5000	8000	13000
0,2	750	1200	1950	3000	4800	7500	12000	19500
0,3	1000	1600	2600	4000	6400	10000	16000	26000
0,4	1250	2000	3250	5000	8000	12500	20000	32500
0,5	1500	2400	3900	6000	9600	15000	24000	39000
0,6	1750	2800	4550	7000	11200	17500	28000	45500
0,7	2000	3200	5200	8000	12800	20000	32000	52000
0,8	2250	3600	5850	9000	14400	22500	36000	58500
0,9	2500	4000	6500	10000	16000	25000	40000	65000
1,0	2750	4400	7150	11000	17600	27500	44000	71500
1,1	3000	4800	7800	12000	19200	30000	48000	78000
1,2	3250	5200	8450	13000	20800	32500	52000	84500
1,3	3500	5600	9100	14000	22400	35000	56000	91000
1,4	3750	6000	9750	15000	24000	37500	60000	97500
1,5	4000	6400	10400	16000	25600	40000	64000	104000
1,6	4250	6800	11050	17000	27200	42500	68000	110500